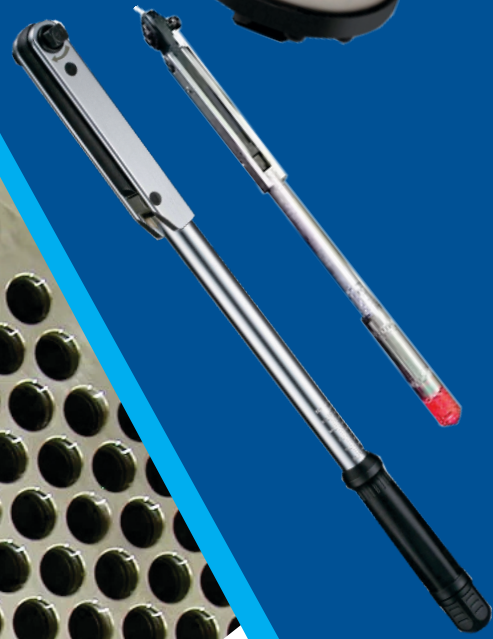




**SHINGARE™**  
INDUSTRIES PVT LTD



**TORQUE  
TOOLS**

**BHARTIYA**

TUBE TOOLS



## TUBE TOOLS

# INTRODUCTION

Education is necessary but not a pre-requisite for success in life. Bhartiya Industries is the best example of this theory. Mr. Suryakant Shingare (HARIBHAI), the founder of the company is a non-matriculate technocrat with more than 10 years experience in flexible shaft manufacturing. He founded this company in 1989.



## Basic Products:

Engineering products is our forte. We manufacture engineering products such as tube expander, tube cleaner, tube tools, hydraulic tube expansion, tube pulling, and pipe beveling machines. We also deal in manufacture of flexible shaft grinders, construction equipment, hydraulic torque wrench, impact socket, pneumatic tapping machines, and many more...

## Brief History of the Company:



We were a small industry until 2003 engaged in production and supply of different types of flexible shafts for tube cleaning, brushes, flexible shaft grinder, and concrete vibrators. The year 2003 was a watershed year for the company.

**Mr. Pradip Shingare**, son of **Mr. Hari Shingare**, graduated from Mumbai University with a degree in Mechanical Engineering. He had great plans to take the company forward on the route to expansion. He ventured into export of the engineering products. By 2008, the company acquired the reputation as the largest exporter of tube cleaning machines and flexible shafts in India.

The year 2009 saw the expansion of the company into manufacture of products such as Tube expander, tube tools, and tube pulling machines. The company witnessed a record double-digit growth in this product range. In 2011, the company started developing a product range of pipe beveling machines. These machines are extremely popular in India as well as in the overseas market. The year 2013 witnessed the company foray into imports of different types of tools such as tapping tools, grinding tools, etc making us the leading player in India in these categories.

The year 2015 saw us entering into the sugar industry component with the manufacture of the Heavy Duty Sugar Dust Collector machine, FlexRepair40 machine. In 2016, we awarded with ISO 9001:2008 certification for strictly followed quality norms and processes.

## Dedicated Staff:

We have a dedicated team of more than 40 people, many of whom are with us since the early days of the company. We have an excellent blend of youth, knowledge, and experience in our ranks.

## Export oriented:

We export over 60% of our products to more than 60 countries all over the globe.

## Expansion:

We feel the need to expand our business to enable us to serve the people of this country better. With this aim in mind, we established a new company in the name of SHINGARE INDUSTRIES PVT. LTD.

**Motto: Our main motto of business is "Growth with Trust."**

We believe in the "Make in India" concept espoused by our honorable Prime Minister Shri Narendra Modi. Our mission is innovation and creation of an import substitute product in India.



# CONTENTS

Sr. No.	Product	Page
1.	Hydraulic Torque Wrench	2
2.	Hand Torque Multipliers	3
3.	Nut Splitters	4
4.	Spring Balancer	5

-----

## Our Successful Participation in Trade Fairs and Conventions in INDIA and Overseas.



SISSTA BENGALURU 2015



SISSTA, CHENNAI 2016



STAI, NEW DELHI 2016



SISSTA, TIRUPATI 2017



MAHATECH, PUNE 2015

# HYDRAULIC TORQUE WRENCHES



TUBE TOOLS

## TORQUE WRENCHES

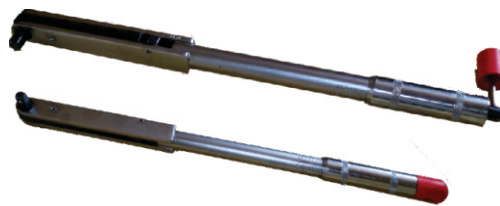
Torque Wrench is calibrated tool recommended for use in controlled tightening of nuts & bolts to avoid over/under stressing. **Bhartiya Torque Wrenches** are **Preset/Adjustable** click type torque wrenches which are available in **ratchet** and **non ratchet types**. These torque wrenches are compact, light weight & rigid to suit the rugged working conditions prevailing in Indian industries particularly the automobile sector.

Our torque wrenches are being very successfully used by Many heavy industrial organization in India. Besides these all Vehicle & Automobile manufacturers are extensively using our Torque Wrenches.

### FEATURES:

**Bhartiya Torque Wrench** is a fast acting precision spanner cum instrument of an entirely new design for tightening of bolts & nuts to the required Torque. The Torque Wrenches are available in a set of 12 models converging Torque requirement from 3 to 2500 Nm.

**Bhartiya Torque Wrench** calibrated to an accuracy of 3% on Electronic calibrators & our Equipments are traceable to National Physical Laboratories, an important prerequisite for ISO 9000. Each & every Torque Wrench is accompanied with is Calibration Certificate. These are also traceable National Standards and we guarantee our Torque Wrenches against any premature failure. These torque wrenches are also available in special production model to suit exact Torque requirement and critical application that do not have direct access.



### APPLICATION:

Automobile, Heavy Engineering, Petrochemicals, Fertilizers, Aeronautics & Defence Organisations etc.

Ratchet	Non-Ratcheting	Torque Range				Square Drive		Length		Weight	
		N.m	Kg.m	Lbf.in	Lbf.ft	Inch	Mm	Inch	Mm	Inch	Mm
BTW-100	BTW-100 R	3-11	0.3-1.2	20-100	2-8	3/8	9.52	12.52	318	1.23	0.56
BTW-300	BTW-300 R	5-11	0.5-3.4	40-300	4-24	3/8	9.52	16.60	422	1.32	0.60
BTW-600	BTW-600 R	12-68	1.2-7	100-600	10-50	1/2	12.7	18.74	476	2.25	1.02
BTW-1200	BTW-1200 R	25-135	3-14	200-1200	20-100	1/2	12.7	21.49	546	3.59	1.62
BTW-2000	BTW-2000 R	50-225	5-23	400-2000	40-160	1/2	12.7	23.50	597	5.26	2.38
BTW-3000	BTW-3000 R	70-330	7-35	600-3000	50-250	1/2	12.7	32.48	825	6.90	3.12
BTW-5000	BTW-5000 R	140-560	14-57	1200-5000	100-410	3/4	19.1	44.49	1130	13.03	5.90
BTW-7200	BTW-7200 R	200-810	20-82	1800-7200	150-600	3/4	19.1	46.49	1181	14.37	6.50
BTW-8400	BTW-8400 R	480-910	49-35	4200-8400	350-700	1	25.4	55.00	1397	24.97	11.30
BTW-12300	BTW-12300 R	700-1380	70-140	6000-12300	500-1000	1	25.4	59.25	1505	34.25	15.50
BTW-10	BTW-10 R	1015-1890	105-195	-	750-1400	1	25.4	49.56	1259	36.47	16.50
BTW-11	BTW-11 R	1350-2700	135-275	-	1000-2000	1	25.4	57.72	1466	43.10	19.50

**Note:** For your requirement of Direct Reading Dial Wrenches, High Precision Beam Type Wrenches, Micrometer Adjustable/Preset Production type or Interchangeable Head type Torque Wrenches please mail us stating your requirement & Torque Specifications.



# TORQUE MULTIPLIERS



## HAND TORQUE MULTIPLIERS

**Bhartiya Torque Multipliers** are heavy duty tools used to increase the Torque produced by Torque Wrenches. They have been developed to meet the high Torque requirements and keeping in view space restrictions in Torque Wrench applications. Torque multipliers are suggested for either tightening of high tensile bolts or loosening Rusty & Frozen but bolts.

### FEATURES:

**Bhartiya Torque Multipliers** are precision Gear units designed for multiplication of input Torque multipliers are recommended to be used where very high Torque (over 100 kg mtr.) Are required to minimize input effort. As such the use of Torque multipliers reduces the manpower required as well as the operators fatigue.

The multiplier has a gear mechanism by which the Torque applied on the input side is multiplied in a particular ratio. Bharatiya Torque Multipliers are available in Multiplication Factors of 5:1 & 25:1. Torque Multiplier covers Torque requirement from 100 kg mtr. To 925 kg mtr. (750 lb. Ft to 7000 lb.ft)



### APPLICATION:

Bhartiya Tool Torque Wrenches are recommended to be used at the Input end to achieve an exactly calculated output Torque so the fluctuation of efficiency remains extremely small over period. It is extensively used in large Petrochemicals and Refineries.

### SPECIFICATION

Hand Torque Model No.	Maximum Output Torque			Estimated Bolt Capacity (S.Quantity)		Multipliation Factor	Female Input Sq.	Male Input Sq.	Major Dia	Depth	Recommended Torque Wrench No.	Approx Weight with Reaction Plate kg
	Lbft	Nm.	Kgf.m.	In.	Mm							
BM-1	1250	1700	170	1 1/8	28	5	1/2	3/4	115	85	BTW-3000	4.5
BM-2	1250	1700	170	1 1/8	28	5	3/4	1	115	93	BTW-3000	5.0
BM-2/25	1250	1700	170	1 1/8	28	25	1/2	1	115	120	BTW-3600	7.0
BM-5	2000	2700	275	1 3/8	35	5	3/4	1	136	100	BTW-5000	8.0
BM-5/25	2000	2700	275	1 3/8	35	25	1/2	1	136	130	BTW-1200	11.0
BM-6	2500	3400	345	1 1/2	38	5	3/4	1 1/2	136	105	BTW-8400	8.5
BM-6/25	2500	3400	345	1 1/2	38	25	1/2	1 1/2	136	130	BTW-1200	11.5
BM-7	4500	6000	622	2 1/2	62	5	3/4	1 1/2	168	125	BTW-12300	15.5
BM-7/25	4500	6000	622	2 1/2	62	25	1/2	1 1/2	168	180	BTW-3000	19.5
BM-9/25	7000	9500	965	3	75	25	3/4	1 1/2	220	170	BTW-5000	27.0

# NUT SPLITTERS



TUBE TOOLS

For Removing Frozen Nuts The Proper Way

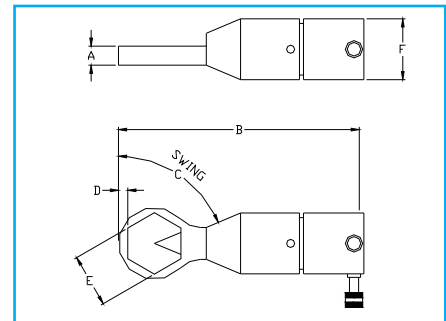
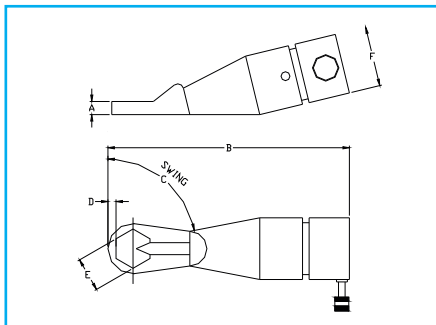
## FEATURES / Benefits:

- Safe : No Flames. No Sparks. No Risk to volatile surroundings. No Hammers Or Impact needed.
- No flying fragments.
- Fast : Cuts a 3" Nut in 20 to 30 seconds vs. Approx. 20 minutes with a hammer & Chisel or torch.
- No Damage to bolt or stud threads by Calibrating the chisel so that only the nut is cut.
- Easy Set up : You can be up & away in less than 5 minutes.
- Versatile : Nut Splitters cut the hardest nuts. The range of models offered & the range of each model compares very favorably vs. The competition.
- Price : Competitive price of the unit plus savings in reduces downtime & no damage to costly bolts & studs.



## Nut Splitters

Model - BNS - 105 to Model - BNS - 506



## Nut Splitter Angle Headed

Model - BNS - 100

For removing Frozen Nuts the right way.  
Other Angle splitter sizes quoted on request.

Model No.	Stud Diameter		Nut A/F		A		B		C	D		E		F		Weight	
	Inch	Mm	Inch	Mm	In.	Mm	In.	Mm		In.	Mm	In.	Mm	In.	Mm	Kg	Lbs
BNS-100	7/16-5/8	11-16	1/2-1	13-14	11/16	17.5	10.1/4	260.0	30"	1/4	6.0	1.1/16	27.0	2.7/9	72.5	3.76	8.20
BNS-105	7/16-7/8	11-12	5/8-1.7/16	16-36	1.1/2	38.1	10.7/16	271.0	60"	3/8	9.5	1.1/2	38.1	4.1/8	105.0	9.82	21.60
BNSS-200	7/8-1.1/4	22-32	1.7/16-2	36-51	1.1/2	38.1	11.5/16	297.0	45"	1/2	12.7	2.1/8	54.0	4.1/4	108.0	10.42	22.90
BNS-204	1.1/4-1.1/2	32-38	1.13/16-2.3/4	46-60	2.1/4	57.1	15.5/32	385.0	30"	9/16	14.3	2.1/2	63.5	6.7/16	164.0	32.50	71.50
BNS-210	1.3/8-1.3/4	35-45	2.1/4-2.3/4	57-70	2.1/4	57.1	15.11/16	398.0	30"	11/16	17.5	2.7/8	73.0	6.7/16	164.0	32.86	72.30
BNS-308	1.3/4-2.1/4	45-47	2.3/4-3.1/2	70-89	3.1/16	77.8	18.1/8	460.0	30"	3/4	19.0	3.7/8	98.4	8.7/16	214.0	72.12	158.66
BNS-314	1.3/4-2.1/4	50-64	3.1/8-3.7/8	79-98	3.1/8	78.4	19.7/32	488.0	30"	7/8	22.2	4.1/4	108.0	8.7/16	214.0	74.52	163.94
BNS-404	2.1/2-2.3/4	64-70	3.3/4-4.1/4	95-108	3.3/4	95.3	22.13/16	579.0	60"	1.1/8	28.6	4.5/8	117.5	9.7/8	250.8	114.18	251.20
BNS-500	3-3.1/4	78-83	4.1/2-5	114-127	4.1/8	104.8	23.7/32	590.0	60"	1.1/8	28.6	5.3/8	138.5	9.7/8	250.8	116.62	256.56
BNS-508	3.1/4-3.1/2	83-89	4.7/8-5.3/8	125-136	4.1/8	104.8	23.17/32	598.0	60"	1.1/8	28.6	5.7/8	149.2	9.7/8	250.8	119.50	262.90

If you have an application not covered by the models above just call us & we will provably be able to design a model for you.



# SPRING BALANCER

## BSEW SERIES



These balancers are provisioned with wire arrest mechanism, which locks the drum pulley in case of tool disengagement. These balancers are available for capacity from 9-70 Kg. & have all the feature of BSWF balancers as well. These balancers are primarily used with welding guns and applications where changes of wire slitting or tool disengagement due to accidental failure are higher.

BHARTIYA Spring Balancer is a safe and completely reliable means of suspending working tools:

- Portable Hand Tools
- Welding Guns
- Spray Guns
- Shot Blast Guns
- Drifting Attachments in Mines and Quarries
- Jute and Synthetic Bag Closing Machines Etc.



### FEATURES:

- Quick Installations
- Heavy Duty Spring
- Easy Tension Adjustment- No tools required
- Durable Nylon covered steel rope
- Convenient Snap type tool clip
- Inline alignment of Hanger & Tool Hook
- Ergonomic Design User Friendly

Capacity	Model No.	Weight	Travel	Capacity	Model No.	Weight	Travel
Kg.		Kg.	Meter	Kg.		Kg.	Meter
9.0-15.0	BSEW-15	5.0	1.3	9.0-15.0	BSEW-15 L	10.0	2.3
15.0-22.0	BSEW-22	9.0	1.5	15.0-22.0	BSEW-22 L	10.0	2.3
22.0-30.0	BSEW-30	10.0	1.5	22.0-30.0	BSEW-30 L	11.0	2.3
30.0-40.0	BSEW-40	12.5	1.5	30.0-40.0	BSEW-40 L	14.5	2.3
40.0-50.0	BSEW-60	13.0	1.5	40.0-50.0	BSEW-60 L	15.0	2.3
50.0-60.0	BSEW-60	13.5	1.5	50.0-60.0	BSEW-60 L	16.0	2.3
60.0-70.0	BSEW-70	14.0	1.5	60.0-70.0	BSEW-70 L	16.5	2.3

## Closed Body Sheet Metal Spring Balancer

The range of spring balancer comprises of a sheet metal body housing a spring wound on a shaft with safe, protective, tensioning system.

### FEATURES:

BHARTIYA Spring Balancer is a safe and completely reliable means of suspending working tools Portable Hand Tools, Welding Guns, Spray Guns, Shot Blast Guns, Drifting Attachments in Mines and Quarries, Jute and Synthetic Bag Closing Machines Etc.

- Quick Installations
- Heavy Duty Spring
- Easy Tension Adjustment-No tools required
- Durable Nylon Covered Steel Rope
- Convenient snap type tool clip
- Inline alignment of Hanger & Tool Hook
- Ergonomic Design user Friendly



Model No.	Capacity	Cable Travel	Diameter of Cable	Weight
	Kg.	(Mtr.)	(mm)	Kg.
BSPC-3	1.0 to 3.0	1.5	2.8	1.5
BSPC-3L	1.0 to 3.0	2.5	2.8	1.7
BSPC-3.5L	2.5 to 3.5	3	2.5PVC Nylon	1.7
BSPC-5	2.5 to 5.0	1.5	2.8	1.5
BSPC-5L	2.5 to 5.0	2.5	2.8	1.7

## OUR MAJOR CLIENTS

Please see below our robust and valued client list that uses BHARTIYA products repeatedly. We take pride in our partnerships and the ability to grow with such amazing group of companies.



**LARSEN & TOUBRO**



**Reliance  
Industries Limited**



**SHINGARE**  
INDUSTRIES PVT LTD

SHINGARE INDUSTRIES PVT. LTD.  
Formerly known as Bharatiya Industries

Manufacturer & Exporter of Tube Cleaners, Flexible Shafts, Tube Tools, Pipe Beveling Machines, Torque Tools, Grinding Tools, Tapping Tools.

Plot No.268, Digvijay Industrial Estate No.2, Upavan, Pokharan Rd. No.1, Thane (W) - 400 606, M. S. INDIA.

+91 22 25854509 | +91 90290 05461 | +91 22 25883527 | bharatflex@yahoo.com | spradip@tubecleaner.co.in

www.shingare.com | www.tubecleaner.co.in