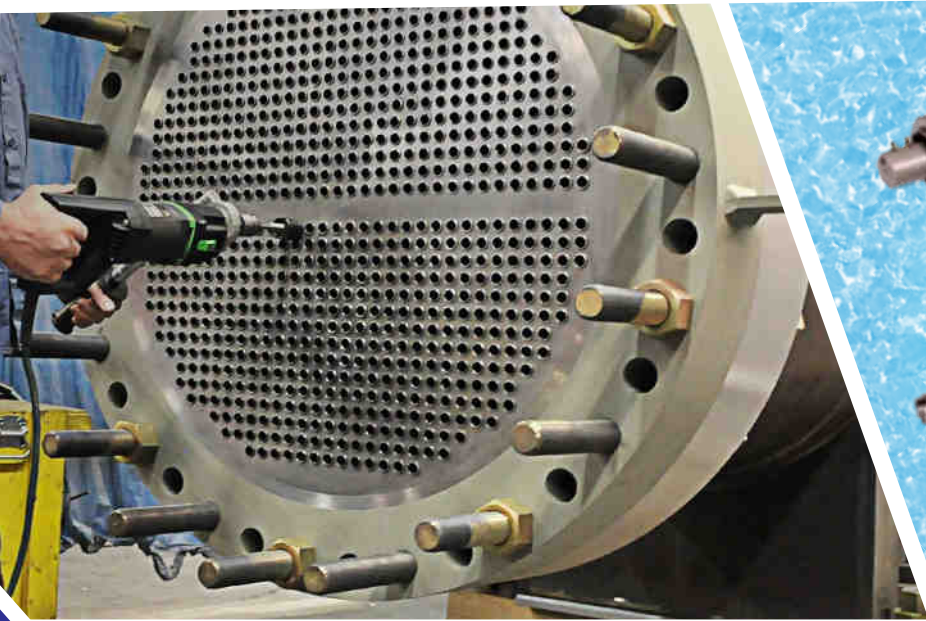


# TUBE INSTALLATION TOOLS



TUBE TOOLS



# SHINGARE

INDUSTRIES PVT LTD

**MANUFACTURER & EXPORTER OF**

Tube Cleaners, Tube Tools,  
Tube Expanders, Bolting Tools, Impact Sockets,  
Pipe Beveling Machines, Pipe Cold Cutting Machines,  
High Pressure Water Jet Cleaning Machines & Tapping Machines

Education is necessary but not a pre-requisite for success in life. Bhartiya Industries is the best example of this theory. **Mr. Suryakant Shingare** (HARIBHAI), the founder of the company is a non-matriculate technocrat with more than 10 years experience in flexible shaft manufacturing. He founded this company in 1989.



### Basic Products:

Engineering products is our forte. We manufacture engineering products such as tube expander, tube cleaner, tube tools, hydraulic tube expansion, tube pulling, and pipe beveling machines. We also deal in manufacture of flexible shaft grinders, construction equipment, hydraulic torque wrench, impact socket, pneumatic tapping machines, and many more...

### Brief History of the Company:



We were a small industry until 2003 engaged in production and supply of different types of flexible shafts for tube cleaning, brushes, flexible shaft grinder, and concrete vibrators. The year 2003 was a watershed year for the company.

**Mr. Pradip Shingare**, son of **Mr. Hari Shingare**, graduated from Mumbai University with a degree in Mechanical Engineering. He had great plans to take the company forward on the route to expansion. He ventured into export of the engineering products. By 2008, the company acquired the reputation as the largest exporter of tube cleaning machines and flexible shafts in India.

The year 2009 saw the expansion of the company into manufacture of products such as Tube expander, tube tools, and tube pulling machines. The company witnessed a record double-digit growth in this product range. In 2011, the company started developing a product range of pipe beveling machines. These machines are extremely popular in India as well as in the overseas market. The year 2013 witnessed the company foray into imports of different types of tools such as tapping tools, grinding tools, etc making us the leading player in India in these categories.

The year 2015 saw us entering into the sugar industry component with the manufacture of the Heavy Duty Sugar Dust Collector machine, FlexRepair40 machine.

In 2016, we added **SHINGARE INDUSTRIES PVT. LTD.** a new company in our group. We were awarded ISO 9001:2015 certification for strictly followed quality norms and processes.

### Dedicated Staff:

We have a dedicated team of more than 40 people, many of whom are with us since the early days of the company. We have an excellent blend of youth, knowledge, and experience in our ranks.

### Export oriented:

We export over 60% of our products to more than 55 countries all over the globe.

### Expansion:

We feel the need to expand our business to enable us to serve the people of this country better. With this aim in mind, we established a new company in the name of SHINGARE INDUSTRIES PVT. LTD.

**Our main motto of business is “Growth with Trust.”**

Our mission is to innovate and create an import substitute products in India.



# CONTENTS

Sr. No.	Product	Page
1.	Serrating / Grooving Tool 'BST' Series	4
2.	Serrating / Grooving Tool 'BNW' Series	
3.	Serrating / Grooving Tool 'BSGT' Series	5
4.	Tube Sheet Hole Reamer	6
5.	Tube end Facer - 'BTEF' Series	7
4.	Tube end Facer - 'BFB' Series	
5.	Tube end Facer - 'BFC' Series / Weld Removal Tool	8
6.	Belling Tool	
7.	Tube Sheet Hole Radius Cutter	
8.	Tube Sheet Hole Brush	9
9.	Tube Guide	
10.	Tube Leak Detector Kit	10

## Our Successful Participation in Trade Fairs and Conventions in INDIA and Overseas.



SISSTA BENGALURU 2015



SISSTA, CHENNAI 2016



SISSTA, TIRUPATI 2017



MAHATECH, PUNE 2015



STAI, NEW DELHI 2016

# TUBE INSTALLATION TOOLS



**TUBE TOOLS**

## SERRATING / GROOVING TOOL 'BST' SERIES

### FEATURES:

- High production tool.
- Ideal for use where 1 tool is needed per bore.
- One piece cryogenically treated tool bit ensures maximum life.
- Its suited for CNC application on account of 1piece mandrel construction & short design.
- Note: Grooving tools are available for MM bore sizes also, please enquire.

Size Available :3/8" O.D.to 2.1/2" O.D.



Tool Bit

1/8" x 3/8" x 1/8"  
or  
1/8" x 1/4" x 1/8"

### FOR GROOVING IN TUBE SHEETS

Tube O. D		Tool Model No.	Spare Tool Bits		
Inch	Mm		1/8"x1/4x1/8"	1/8"x3/8x1/8"	Special Spacing
3/8	9.53	BST-375-970	BST-3703-S	BST-3703	BST-3703-SPEC
1/2	12.70	BST-500-1270	BST-5003-S	BST-5003	BST-5003-SPEC
5/8	15.87	BST-625-1588	BST-6203-S	BST-6203	BST-6203-SPEC
3/4	19.05	BST-750-1900	BST-7503-S	BST-7503	BST-7503-SPEC
7/8	22.22	BST-875-2220	BST-7503-S	BST-7503	BST-7503-SPEC
1	25.40	BST-1000-2540	BST-7503-S	BST-7503	BST-7503-SPEC
1.1/4	31.75	BST-1250-3175	BST-7503-S	BST-7503	BST-7503-SPEC
1.1/2	38.10	BST-1500-3810	BST-7503-S	BST-7503	BST-7503-SPEC
2	50.80	BST-2000-5080	BST-7503-S	BST-7503	BST-7503-SPEC
2.1/2	63.50	BST-2500-6350	BST-7503-S	BST-7503	BST-7503-SPEC

**Note : Serrating Tools are available for MM bore sizes also. Please enquire.**

## SERRATING / GROOVING TOOL 'BNW' SERIES



Size Available :3/8" O.D.to 1.1/2" O.D.

### FEATURES:

- Simple to change cutter for different groove shapes.
- Changing of pilot nose & cutter allows one tool to cover a range of hole diameters.
- Location & depth of cut easy to adjust.
- Only light pressure required to cut precision grooves.
- Ready to fit CNC drill machines, lathe and boring machines.
- The life of the cutter extendable by re-shapening.

Bore Range		Tool Model No.	Pilot Nose Model No.	Circular Form Cutter Model No.	Tool Bit Holder Model No.	Spare Tool Bit Model No.
Inch	Mm					
3/8-1.1/4	9-32	1BNW-2 MT	1 BNW - PN	1BNW - CF	1BNW - TBH	1BNW - TB
5/8- 1.3/4	16-45	2 BNW-3 MT	2 BNW - PN	2 BNW - CF	2 BNW - TBH	2 BNW - TB
3/4-1.7/8	19-48	4 BNW-4 MT	4 BNW - PN	4 BNW - CF	4 BNW - TBH	4 BNW - TB
1.1/2-4	38-102	6 BNW-5 MT	6 BNW - PN	6 BNW - CF	6 BNW - TBH	6 BNW - TB

**Note : Specify whether you need Circular Form Cutter (one piece HSS construction ) or Tool Bit, when ordering. Refer to operation manual for spare parts list.**

## SERRATING / GROOVING TOOL 'BSGT' SERIES

Leveraging on our highly sophisticated facility, we are engaged in offering high quality grooving tools (BSGT Series).

Size Available : 3/8" O.D.to 3" O.D.

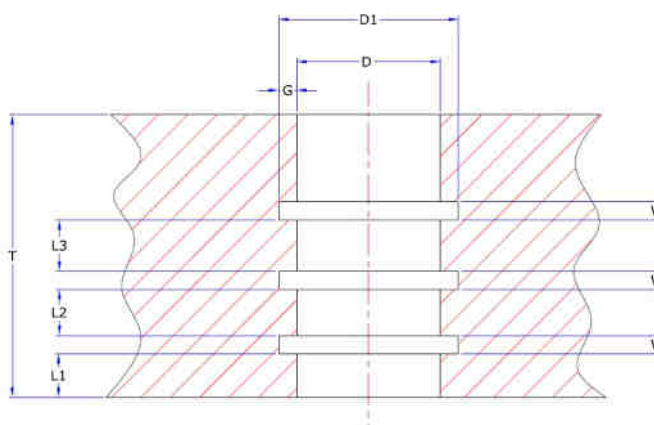


### FEATURES:

- Simple to change cutter for different groove shapes.
- Changing of pilot nose & cutter allows one tool to cover a range of hole diameters.
- Location & depth of cut easy to adjust.
- Only light pressure required to cut precision grooves inside holes or cylinders.
- The life of the cutter extendable by re-shapening.

Bore Range		Tool Model No.	Pilot Nose/Brushing Model No.	Tool Bits Model No.
Inch	Mm			
0.40-0.51	10-13	BSGT-102	BSGT-102-PN	BSGT-102-TB
0.50-0.63	12.7-16	BSGT-122	BSGT-122-PN	BSGT-122-TB
0.63-0.79	16.20	BSGT-162	BSGT-162-PN	BSGT-162-TB
0.75-1.26	19.32	BSGT-193	BSGT-193-PN	BSGT-193-TB
1.18-2.05	30.22	BSGT-303	BSGT-303-PN	BSGT-303-TB
1.97-3.07	50.18	BSGT-504	BSGT-504-PN	BSGT-504-TB

**PLEASE SUPPLY FOLLOWING INFORMATION WHEN ORDERING GROOVING TOOLS OR SPARE CUTTERS.**



A	Bore Dia after reaming with Tolerances	D
B	Tube Plate Thickness	T
C	Distance of First Groove	L1
D	Total Number of Grooves	N
E	Spacing of Grooves	L2,L3
F	Groove Width	W
G	Diameter of Grooves	D1
H	Groove Undercut Depth	G

## TUBE SHEET HOLE REAMER

Size Available : 3/8" O.D.to 1.1/4" O.D.



### FEATURES:

- Ideal for heat exchanger and condenser tube sheet reaming.
- High speed steel, cryogenically treated & coated with Titanium, Nitride for long life.
- Reamers are available in MM sizes also.
- For larger diameters, please enquire.

Tube O. D		Reamer Size		Model No.	Flute Length		OAL		Shank Morse Taper#
Inch	Mm	To“TEMA” Specifacaton			Inch	Mm	Inch	Mm	
3/8	9.53	380	9.65	BRM-095/66	2.60	66	5.70	146	1
				BRM-095/101	3.97	101	7.12	181	
				BRM-095/152	5.98	152	9.13	232	
1/2	12.70	505	12.83	BRM-127/76	2.99	76	6.14	156	1
				BRM-127/101	3.97	101	7.12	181	
				BRM-127/152	5.98	152	9.13	232	
5/8	15.87	631	16.03	BRM-158/87	3.42	87	7.36	187	2
				BRM-158/152	5.98	152	9.92	252	
				BRM-158/203	7.99	203	11.93	303	
-	16.00	636	16.16	BRM-160/152	3.42	152	7.87	187	2
				BRM-160/203	5.98	203	7.12	252	
				BRM-160/152	7.99	152	11.93	303	
3/4	19.05	758	19.25	BRM-190/100	3.90	100	7.87	200	2
				BRM-190/152	5.98	152	7.12	252	
				BRM-190/203	7.99	203	11.93	303	
-	20.00	795	20.20	BRM-200/100	3.90	100	8.15	207	2
				BRM-200/152	5.98	152	9.92	252	
				BRM-200/203	7.99	203	11.93	303	
-	22.00	875	22.22	BRM-220/107	4.21	107	8.15	207	2
				BRM-220/152	5.98	152	9.92	252	
				BRM-220/203	7.99	203	11.93	303	
7/8	22.22	883	22.42	BRM-222/107	4.21	107	8.15	207	2
				BRM-222/152	5.98	152	9.92	252	
				BRM-222/203	7.99	203	11.93	303	
-	25.00	994	25.25	BRM-250/115	4.53	115	9.53	242	3
				BRM-250/203	5.98	203	12.99	330	
				BRM-250/254	10.00	254	15.00	381	
1	25.40	1.010	25.65	BRM-254/115	4.53	115	9.53	242	3
				BRM-254/203	5.98	203	12.99	330	
				BRM-254/254	10.00	254	15.00	381	
1.1/8	28.57	1.136	28.86	BRM-285/124	4.88	124	9.88	251	3
				BRM-285/203	7.99	203	12.99	330	
				BRM-285/254	10.00	254	15.00	381	
1.1/4	31.75	1.262	32.07	BRM-317/133	5.23	133	11.53	293	4
				BRM-317/203	7.99	203	14.29	363	
				BRM-317/254	10.00	254	16.30	414	

## TUBE END FACER - 'BFC' SERIES / WELD REMOVAL TOOL

We offer is a qualitative variety of Tube End Facer at very affordable prices.

Tube O.D		Facer Fitted With 3 Tools Bits Model No.	Spare Tools Bits Model No.
Inch	Mm		
1.1/2	38.10	BFC-1500	BFC-1500-TB
1.5/8	41.27	BFC-1625	BFC-1625-TB
1.3/4	44.45	BFC-1750	BFC-1750-TB
1.7/8	47.62	BFC-1875	BFC-1875-TB
2	50.80	BFC-2000	BFC-2000-TB
2.1/4	57.15	BFC-2250	BFC-2250-TB
2.3/2	63.50	BFC-2500	BFC-2500-TB
2.3/4	69.85	BFC-2750	BFC-2750-TB
3	76.20	BFC-3200	BFC-3200-TB
3.1/4	82.55	BFC-3250	BFC-3250-TB
3.3/2	88.90	BFC-3500	BFC-3500-TB
3.3/4	95.25	BFC-3750	BFC-3750-TB
4	101.6	BFC-4000	BFC-4000-TB

Size Available :3/8" O.D.to 4" O.D.

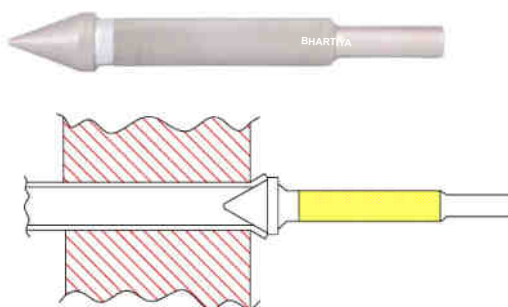


### FEATURES:

- Tool uses 3 cutting blades which can be configure for tube end facing or weld removal as step in the removal of welded tubes from the tube sheet.
- Tool fitted with MT shank for use with standard air or electric drills.
- Cutting blades are titanium Nitride coated to give 3 times the life Of conventional cuttin blades.
- Ideally suited for work on larger diameter boiler tubes.
- Tools available for MM size of tubes also.Please enquire

Tube O. D		Tube Thk BWG	Model No.
Inch	Mm		
1/2	12.70	16-22	BFT-1
5/8	15.87	14-15	BFT-2
		16-22	BFT-3
3/4	19.05	14-15	BFT-4
		16-22	BFT-5
7/8	22.22	14-15	BFT-6
		16-22	BFT-7
1	25.40	12-15	BFT-8
		16-22	BFT-9
1.1/8	28.57	12-15	BFT-10
		16-22	BFT-11
1.1/4	31.75	8-14	BFT-12
		15-22	BFT-13
1.3/8	34.92	8-14	BFT-14
		15-22	BFT-15
1.1/2	38.10	8-14	BFT-16
		15-22	BFT-17

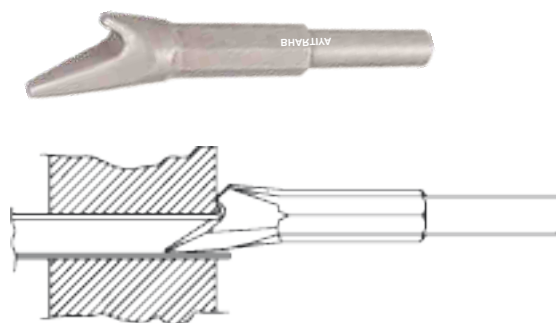
### FLARING TOOL:



**Note : Fitted with Type 1 round shank for use with standard Pneumatic chipping hammer. Other shanks on request.**

Tube O. D		Tube Thk BWG	Model No.
Inch	Mm		
1/2	12.70	16-22	BBDT-1
5/8	15.87	14-15	BBDT-2
		16-22	BBDT-3
3/4	19.05	14-15	BBDT-4
		16-22	BBDT-5
7/8	22.22	14-15	BBDT-6
		16-22	BBDT-7
1	25.40	12-15	BBDT-8
		16-22	BBDT-9
1.1/8	28.57	12-15	BBDT-10
		16-22	BBDT-11
1.1/4	31.75	8-14	BBDT-12
		15-22	BBDT-13
1.3/8	34.92	8-14	BBDT-14
		15-22	BBDT-15
1.1/2	38.10	8-14	BBDT-16
		15-22	BBDT-17

### BEADING TOOL



**Note : Fitted with Type 1 round shank for use with standard Pneumatic chipping hammer. Other shanks on request.**



# TUBE INSTALLATION TOOLS



**TUBE TOOLS**

## TUBE END FACER - 'BTEF' SERIES

Size Available :3/8" O.D.to 2.1/2" O.D.

### FEATURES:

- Tool bits are coated with Titanium Nitride to give 3 times the life of conventional tool bits.
- Ideal for quick facing of projecting tube ends in heat exchanger, condensers & boilers.
- One size of tool is suitable for use on multiple tube thickness by interchanging pilot. (TEF-375 is the exception with the tool suitable for one tube ID only.)
- Each tool is supplied with a set of multiple pilots to cover tube thickness.
- Tube end facers for MM sizes of tubes also available. Please enquire.



Tube O.D Inch      Mm		Tube Thk BWG	Model No.	Spare Tool Bits	
				Non-Ferrous or Carbon Steel Tubes Model No.	Stainless Steel Tubes Model No.
3/8	9.53	16.22	BTEF-375	BTEF-376	BTEF-376 SS
1/2	12.70	15.20	BTEF-500	BTEF-506	BTEF-506 SS
5/8	15.87	14.18	BTEF-625	BTEF-626	BTEF-626 SS
3/4	19.05	10.18	BTEF-750	BTEF-756	BTEF-756 SS
7/8	22.22	13-18	BTEF-875	BTEF-876	BTEF-876 SS
1	25.40	11.18	BTEF-1000	BTEF-1006	BTEF-1006 SS
1.1/8	28.57	11.18	BTEF-1125	BTEF-1126	BTEF-1126 SS
1.1/4	31.75	11.18	BTEF-1250	BTEF-1256	BTEF-1256 SS
1.3/8	34.92	11.18	BTEF-1375	BTEF-1376	BTEF-1376 SS
1.1/2	38.10	11.18	BTEF-1500	BTEF-1506	BTEF-1506 SS
1.5/8	41.27	11.18	BTEF-1625	BTEF-1626	BTEF-1626 SS
1.3/4	44.45	11.18	BTEF-1750	BTEF-1756	BTEF-1756 SS
1.7/8	47.62	11.18	BTEF-1875	BTEF-1876	BTEF-1876 SS
2	50.80	11.18	BTEF-2000	BTEF-2006	BTEF-2006 SS
2.1/4	57.15	11.18	BTEF-2250	BTEF-2256	BTEF-2256 SS
2.1/2	63.50	11.18	BTEF-2500	BTEF-2506	BTEF-2506 SS

## TUBE END FACER - 'BFB' SERIES

Size Available :3/8" O.D.to 2.1/2" O.D.

### FEATURES:

- High speed production tools.
- Titanium Nitride coated tool bit can be reversed and used.
- Doubles tool bit life.



Tube O.D Inch      Mm		Tube Thk BWG	Model No.	Spare Tool Bits	
				Non-Ferrous or Carbon Steel Tubes Model No.	Stainless Steel Tubes Model No.
3/8	9.53	16.22	BFB-375	BFB-376	BFB-376 SS
1/2	12.70	15.20	BFB-500	BFB-506	BFB-506 SS
5/8	15.87	14.18	BFB-625	BFB-626	BFB-626 SS
3/4	19.05	10.18	BFB-750	BFB-756	BFB-756 SS
7/8	22.22	13-18	BFB-875	BFB-876	BFB-876 SS
1	25.40	11.18	BFB-1000	BFB-1006	BFB-1006 SS
1.1/8	28.57	11.18	BFB-1125	BFB-1126	BFB-1126 SS
1.1/4	31.75	11.18	BFB-1250	BFB-1256	BFB-1256 SS
1.3/8	34.92	11.18	BFB-1375	BFB-1376	BFB-1376 SS
1.1/2	38.10	11.18	BFB-1500	BFB-1506	BFB-1506 SS
1.5/8	41.27	11.18	BFB-1625	BFB-1626	BFB-1626 SS
1.3/4	44.45	11.18	BFB-1750	BFB-1756	BFB-1756 SS
1.7/8	47.62	11.18	BFB-1875	BFB-1876	BFB-1876 SS
2	50.80	11.18	BFB-2000	BFB-2006	BFB-2006 SS
2.1/4	57.15	11.18	BFB-2250	BFB-2256	BFB-2256 SS
2.1/2	63.50	11.18	BFB-2500	BFB-2506	BFB-2506 SS



## BELLING TOOL

Size Available : 3/8" O.D. to 4" O.D.



### FEATURES:

- In many condensers the inlet end of tubes are required to be seated into the sheet (Not projecting). The contour is a "Bell End" or "Trumpet Mouth" of special shape.

## TUBE SHEET HOLE RADIUS CUTTER

Size Available : 1/2" O.D. to 1.1 / 4" O.D.



### FEATURES:

- MM sizes and cutter with other radii are also available. Please enquire.
- High speed steel tool used in preparing tube sheets to suit the flaring or beading of tube ends outside of or flush with the tube sheet.

## TUBE SHEET HOLE BRUSH

Size Available : 1/4" O.D. to 3" O.D.



### FEATURES:

- Tube Sheet Hole Brush is a high quality hole brush used to clean tube sheet holes before insertion of tubes. They are manufactured using quality-assured grades of raw material, which we source from reliable merchandisers. They are used to clean tube sheet bores, prior to tube installation. It can be used with any standard pneumatic or electric drill and are available in Carbon Steel, Stainless Steel and Brass.

Tube O. D.		Model No.
Inch	Mm	
1/2	12.70	TSHB-1/2
5/8	15.87	TSHB-5/8
3/4	19.05	TSHB-3/4
7/8	22.22	TSHB-7/8
1	25.40	TSHB-1
1.1/4	31.75	TSHB-1.1/4
1.1/2	38.10	TSHB-1.1/2

Tube O. D.		Model No.
Inch	Mm	
1.3/4	44.45	TSHB-1.3/4
2	50.8	TSHB-2
2.1/4	57.15	TSHB-2.2/4
2.1/2	63.50	TSHB-2.1/2
2.23/4	69.85	TSHB-2.3/4
3	76.20	TSHB-3

## TUBE GUIDE



### FEATURES:

- We are engaged in manufacturing a premium variety of Tube Guide which protects the tube end during installation of tubes into the shell of the heat exchanger and ensures accurate alignment of the tube while passing through the baffle plates. Present is a high strength nylon bristles, holds Tube Guide Firmly in tube to 'Pilot' the tube through the tube sheets and baffle plates during tube insertion.

Size Available : 1/2" O.D. to 3" O.D.

Tube O.D		Tube Thk BWG	Model No.
Inch	Mm		
1/2	12.70	16-18	PTG-1
		19-20	PTG-2
		21-23	PTG-2.5
5/8	15.87	12-13	PTG-3
		14-16	PTG-4
		17-20	PTG-5
3/4	19.05	22-24	PTG-5.5
		10-12	PTG-6
		13-16	PTG-7
7/8	22.22	17-20	PTG-8
		21-24	PTG-8.5
		10-12	PTG-9
1	25.40	13-16	PTG-10
		17-20	PTG-11
		21-22	PTG-11.5
1	25.40	8-9	PTG-12.5
		10-12	PTG-12
		13-16	PTG-13
		17-20	PTG-14
		21-22	PTG-14.5

Tube O.D		Tube Thk BWG	Model No.
Inch	Mm		
1.1/4	31.75	10-13	PTG-15
		14-20	PTG-16
		21-22	PTG-16.5
1.3/8	34.92	8-9	PTG-17
		10-13	PTG-18
		14-20	PTG-19
1.1/2	38.50	8-9	PTG-20
		10-13	PTG-21
		14-20	PTG-22
2	50.80	8-9	PTG-23
		11-13	PTG-24
		14-18	PTG-25
2.1/2	63.50	10-13	PTG-26
		14-18	PTG-27

NOTE: For intermediate or larger size please contact us.

## TUBE LEAK DETECTOR KIT

Size Available :1/4" O.D.to 3" O.D.

### FEATURES:

- Simple, Quick and Reliable tube testing
- Each tube Testing Gun weighs less than 1.0 kg.
- Air supply : Uses standard plant air supplies 90 psi (6.0bar)
- Air consumption: 26 cfm (720 l/min)
- Maximum Vacuum: 80%
- Temperature range: -20 C to 80 C
- Dimension:: 230 x 120 x 170 (mm)



Tube leak detector kit (BVLD-3000) is simple & precise test instrument used by manufacture to indentify tube leakage of condensers, heat e s, boiler and other Tubular apparatus.It is the fastest and most accurate method of locating tube leakage for replacement or plugging or installation of new tubes

It works on the principle of vacuum in which the tool sucks the air from the tube and creates a vacuum to a desired reading on gauge.

Steady reading on gauge indicates NO LEAK.

If the reading on the gauge drops it indicates a tube with a LEAK.



### BHARTIYA make BVLD-3000 Leak Detector Test Kit include :

Vacuum Gun :	1 No.
Tube Seal with Nozzle (Any one size) :	1 set.
T handle with plugging nozzle & plugging seal :	1 set
Pneumatic Hose :	2 meter
Compact Carrying Case :	1 Pc.

### SPARES MODEL NO.

Tube Size		Seal	Nozzle Handle Side	Nozzle Gun Side
Inch	Mm	Model No.	Model	Model
6.4-19.05	1/4"-3/4"	P-750	NH-750	NG-750
15.9-31.7	5/8"-1 1/4"	P-1250	NH-1250	NG-1250
28.6-50.8	1 1/4"-2"	P-2000	NH-2000	NG-2000
47.6-76.2	1 7/8"-3"	P-3000	NH-3000	NG-3000

## Our Major Clients

Please see below our robust and valued client list that uses BHARTIYA products repeatedly. We take pride in our partnerships and the ability to grow with such amazing group of companies.



**SHINGARE**  
INDUSTRIES PVT LTD

**SHINGARE INDUSTRIES PVT. LTD.**  
Formerly known as Bharatiya Industries  
Manufacturer & Exporter of Tube Cleaners, Flexible Shafts, Tube Tools, Pipe Beveling Machines, Torque Tools, Grinding Tools, Tapping Tools.  
A-48 B Osiya Mataji Compound, Village Kalher, Retibunder Road, Tal. Bhiwandi, Dist. Thane - 421302, Maharashtra,  
+91 22 25854509 | +91 90290 05461 | +91 22 25883527 | [bharatflex@yahoo.com](mailto:bharatflex@yahoo.com) | [spradip@tubecleaner.co.in](mailto:spradip@tubecleaner.co.in)  
[www.shingare.com](http://www.shingare.com) | [www.tubecleaner.co.in](http://www.tubecleaner.co.in)

*Authorised Dealer*