

CONDENSER TUBE EXPANDER

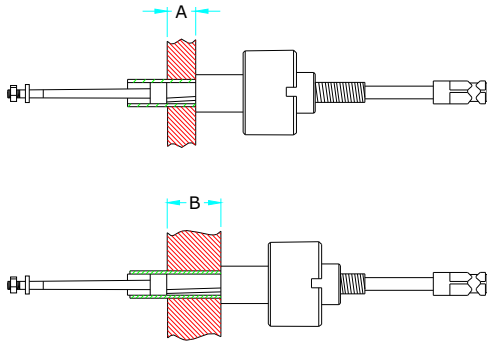


TUBE TOOLS

'B900' SERIES FEATURES:

**Tube O. D.
1 / 4" - 3 / 8"**

- This tool has been the work horse for several years for use on small diameter tubes.
- Use - Oil coolers, Radiators, & other apparatus with small.



**Sizes Available : 1/4" O.D. To 3/8" O.D.
Tube Internal diameter : 3.8mm (0.152") to 8.4mm (0.331")
Roller Length of Tube Expander: 3/4" (19.05mm) & 1.1/4" (31.75mm)**

TUBE EXPANDERS FITTED WITH ROLLER LENGTH	FOR TUBE SHEET ADJUSTABLE RANGE	
	MINIMUM A	MAXIMUM B
(19.05mm) 3/4"	(6.35mm) 1/4"	(19.05mm) 3/4"
(31.75mm) 1.1/4"	(19.05mm) 3/4"	(31.75mm) 1.1/4"

Tube O.D. (Mm) inch	Tube Thickness		Tube I. D.		Minimum I. D. Tool Enters		Maximum Expansion of Tool		EXPANDER with (19.05mm) 3/4" Long rollers			EXPANDER with (31.75mm) 1.1/4" Long rollers			Ratchet Size Square Inch			
	Bwg	Inch	Mm	Inch	Mm	Inch	Mm	Inch	Mm	Complete Tool No.	Roller Set No.	Mandrel No.	Complete Tool No.	Roller Set No.		Mandrel No.		
(6.35) 1/4	18	.049	1.24	.152	3.8	.151	3.8	.173	4.4	B921	921	M-39	-	-	-	1/4		
	19	.042	1.06	.166	4.2	.165	4.1	.185	4.7	B922	922	M-39	-	-	-			
	20	.035	0.88	.180	4.5	.175	4.4	.200	5.1	B923	923	M-40	-	-	-			
	1/4	21	.032	0.81	.186	4.7	.180	4.5	.207	5.2	B924	924	M-40	-	-	-	1/4	
		22	.028	0.71	.194	4.9	.190	4.8	.216	5.5	B925	925	M-41	-	-	-		
		23	.025	0.63	.200	5.0	.195	4.9	.222	5.6	B926	926	M-41	-	-	-		
		1/4	24	.022	0.55	.206	5.2	.201	5.1	.230	5.8	B927	927	M-41	-	-	-	1/4
			28	.014	0.35	.222	5.6	.222	5.6	.238	6.0	B928	928	M-41	-	-	-	
			29	.013	0.33	.224	5.7	.222	5.6	.238	6.0	B928	928	M-41	-	-	-	
	(9.53) 3/8	14	.083	2.10	.209	5.3	.201	5.1	.232	5.8	B927	927	M-41	-	-	-	1/4	
		15	.072	1.82	.231	5.8	.230	5.8	.265	6.7	B915	915	M-42	-	-	-		
		16	.065	1.65	.245	6.2	.240	6.1	.275	6.9	B916	916	M-36	B916L	916L	M-36L		
3/8		17	.058	1.47	.259	6.5	.255	6.4	.289	7.3	B918	918	M-38	B920	904	M-38	1/4	
		18	.049	1.24	.277	7.0	.272	6.9	.307	7.8	B901	901	M-30	B902	904	M-30		
		19	.042	1.06	.291	7.3	.286	7.2	.320	8.1	B903	903	M-31	B904	904	M-31		
		1/4	20	.035	0.88	.305	7.7	.300	7.6	.334	8.4	B905	905	M-32	B906	908	M-32	1/4
			21	.032	0.81	.311	7.9	.306	7.7	.340	8.6	B907	907	M-33	B908	908	M-33	
			22	.028	0.71	.319	8.1	.314	7.9	.349	8.8	B909	909	M-34	B910	910	M-34	
1/4		23	.025	0.63	.325	8.2	.320	8.1	.357	9.0	B911	911	M-34	B912	912	M-34	1/4	
		24	.022	0.55	.331	8.4	.320	8.1	.357	9.0	B911	911	M-34	B912	912	M-34		